

# I.E.S. ANTONIO SEQUEROS

C/ Comunidad Valenciana, 55-57  
03160 - Almoradí

Tel: 965700962 Fax: 965701605

## PLANO SITUACIÓN

⚓ HIDRANTE

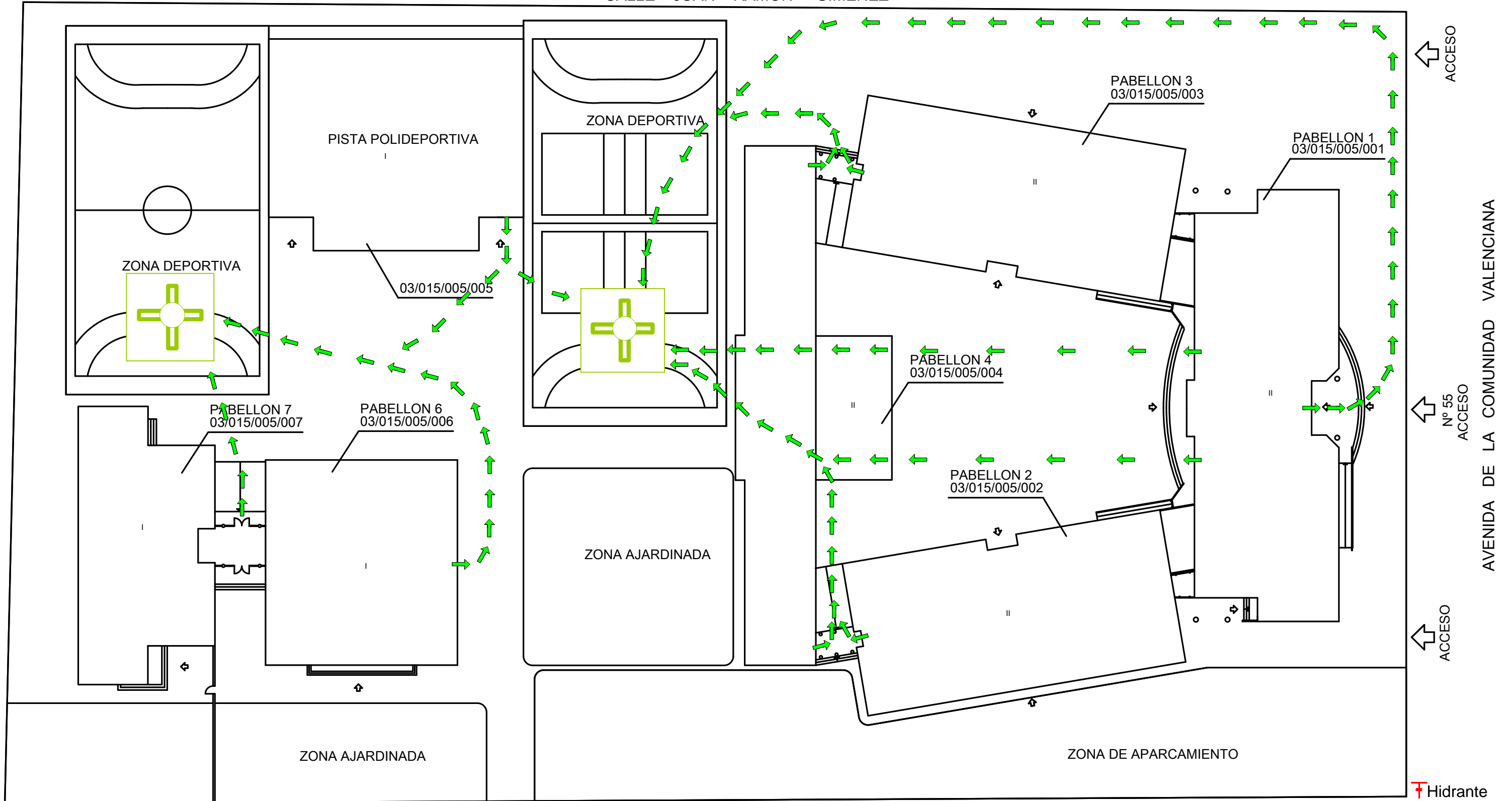
# I.E.S. ANTONIO SEQUEROS



C/ Comunidad Valenciana, 55-57

03160 - Almoradí

Tel: 965700962 Fax: 965701605

CALLE JUAN RAMÓN GIMÉNEZ



 PUNTO DE CONCENTRACIÓN  
 HIDRANTE

   
 ACCESO ACCESO

AVENIDA DE MENENDEZ PIDAL

SUP. PARCELA.-	1.2994,59 m <sup>2</sup>
SUP. EDIFICADA PARCELA.-	3.728,29 m <sup>2</sup>
SUP. PISTAS DEPORTIVAS.-	1.848,00 m <sup>2</sup>
SUP. APARCAMIENTO.-	1.213,00 m <sup>2</sup>
SUP. LIBRE.-	6.205,30 m <sup>2</sup>

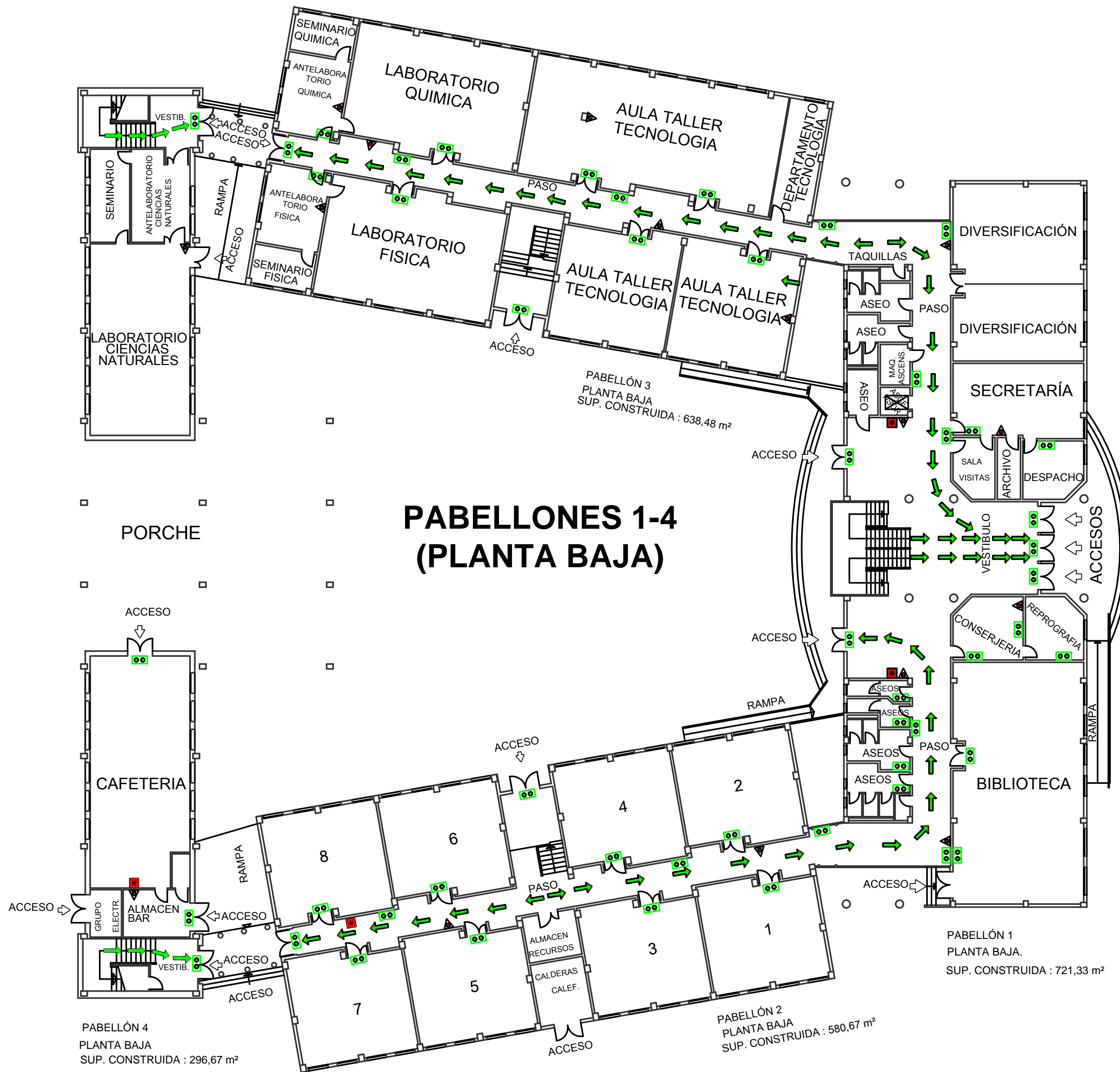
AVENIDA DE LA COMUNIDAD VALENCIANA








# I.E.S. ANTONIO SEQUEROS

C/ Comunidad Valenciana, 55-57

03160 - Almoradí

Tel: 965700962 Fax: 965701605



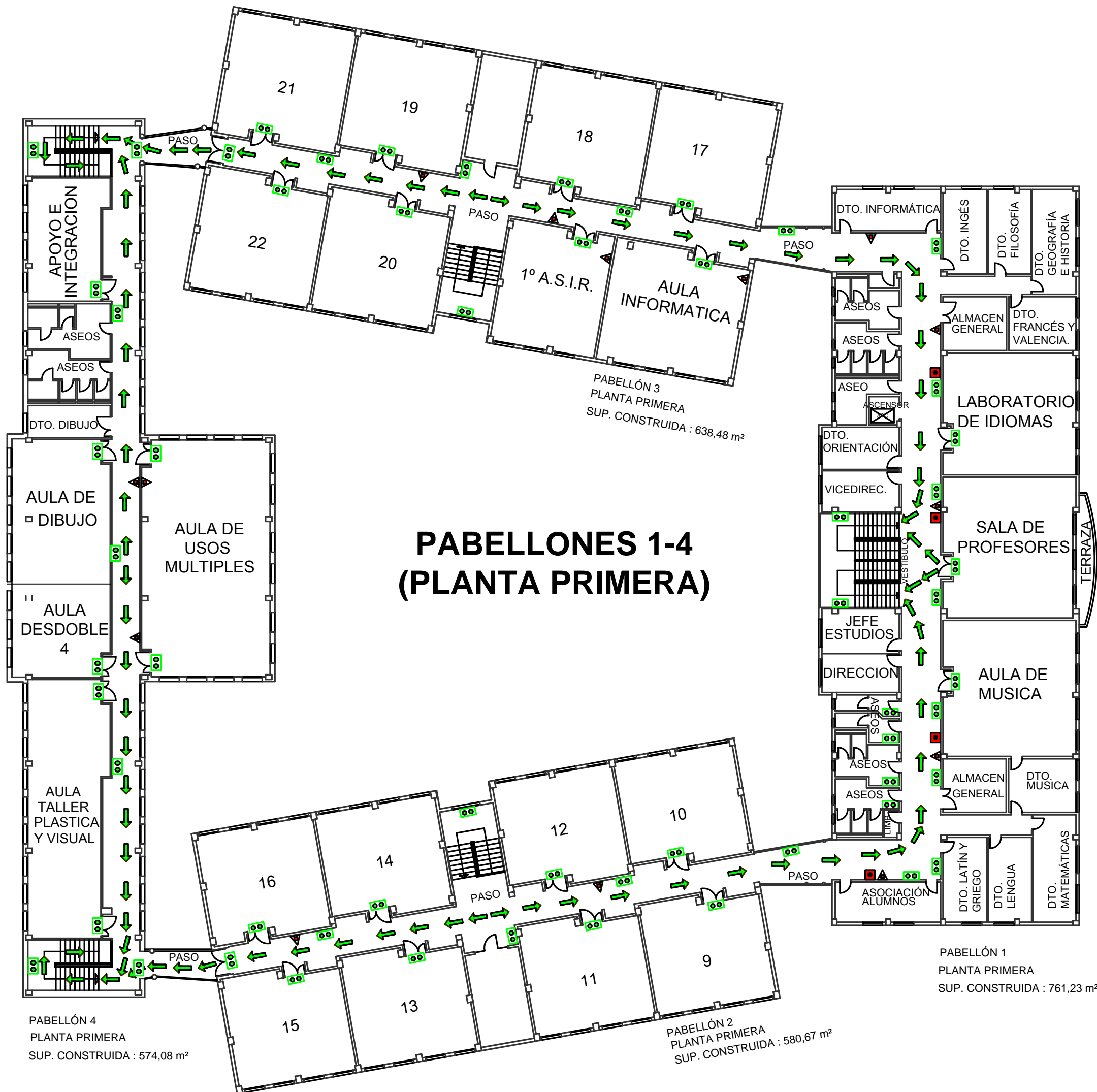
-  PULSADOR DE ALARMA
-  EXTINTOR
-  VÍAS DE EVACUACIÓN
-  LUCES DE EMERGENCIA
-  B.I.E.
-  ASCENSOR
-  USTED ESTÁ AQUÍ

# I.E.S. ANTONIO SEQUEROS

C/ Comunidad Valenciana, 55-57

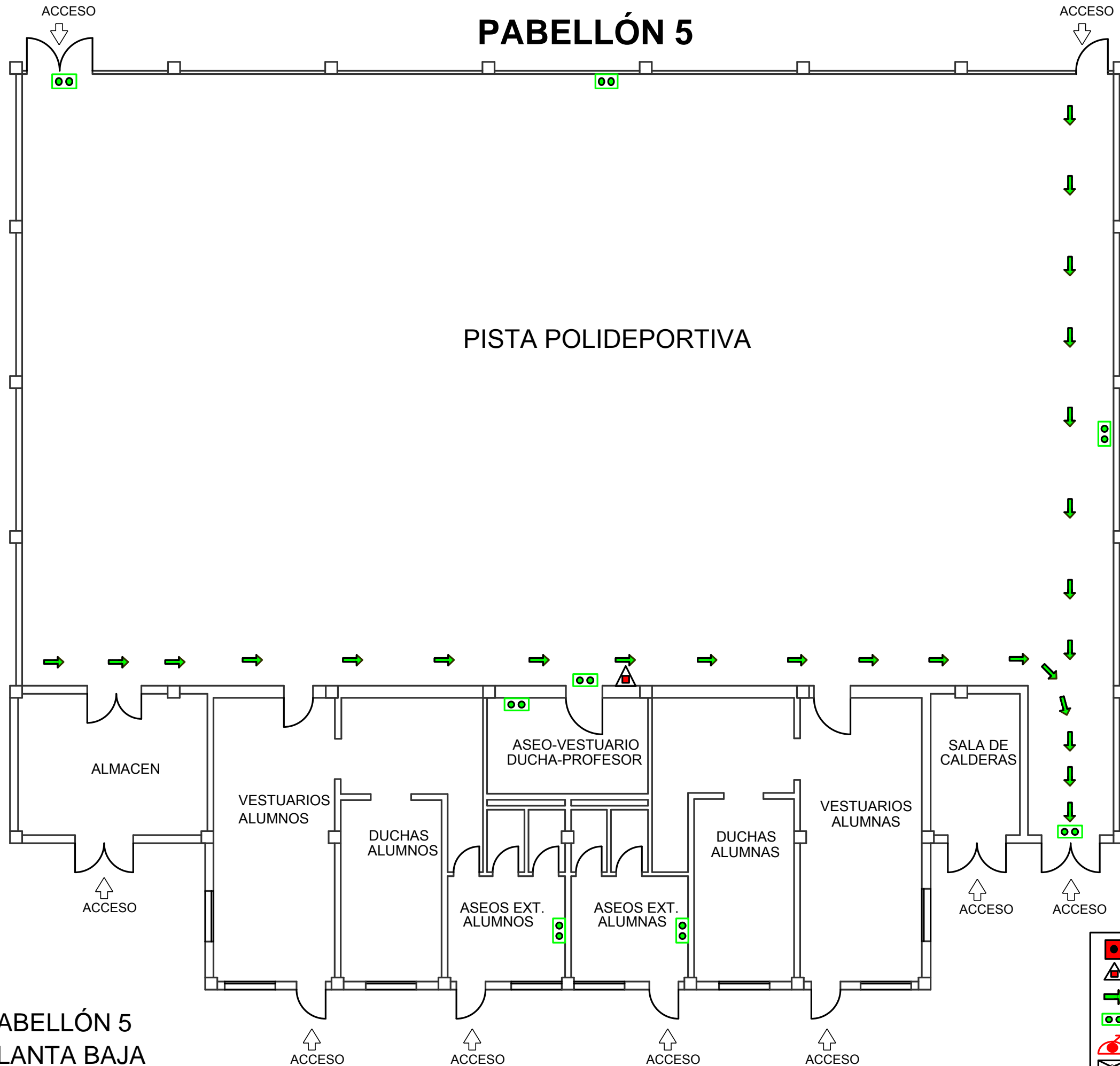
03160 - Almoradí

Tel: 965700962 Fax: 965701605



- PULSADOR DE ALARMA
- ▲ EXTINTOR
- VÍAS DE EVACUACIÓN
- LUCES DE EMERGENCIA
- 👁️ B.I.E.
- X ASCENSOR
- USTED ESTÁ AQUÍ

# PABELLÓN 5



PISTA POLIDEPORTIVA

ALMACEN

VESTUARIOS ALUMNOS

DUCHAS ALUMNOS

ASEOS EXT. ALUMNOS

ASEOS EXT. ALUMNOS








DUCHAS ALUMNOS

VESTUARIOS ALUMNOS

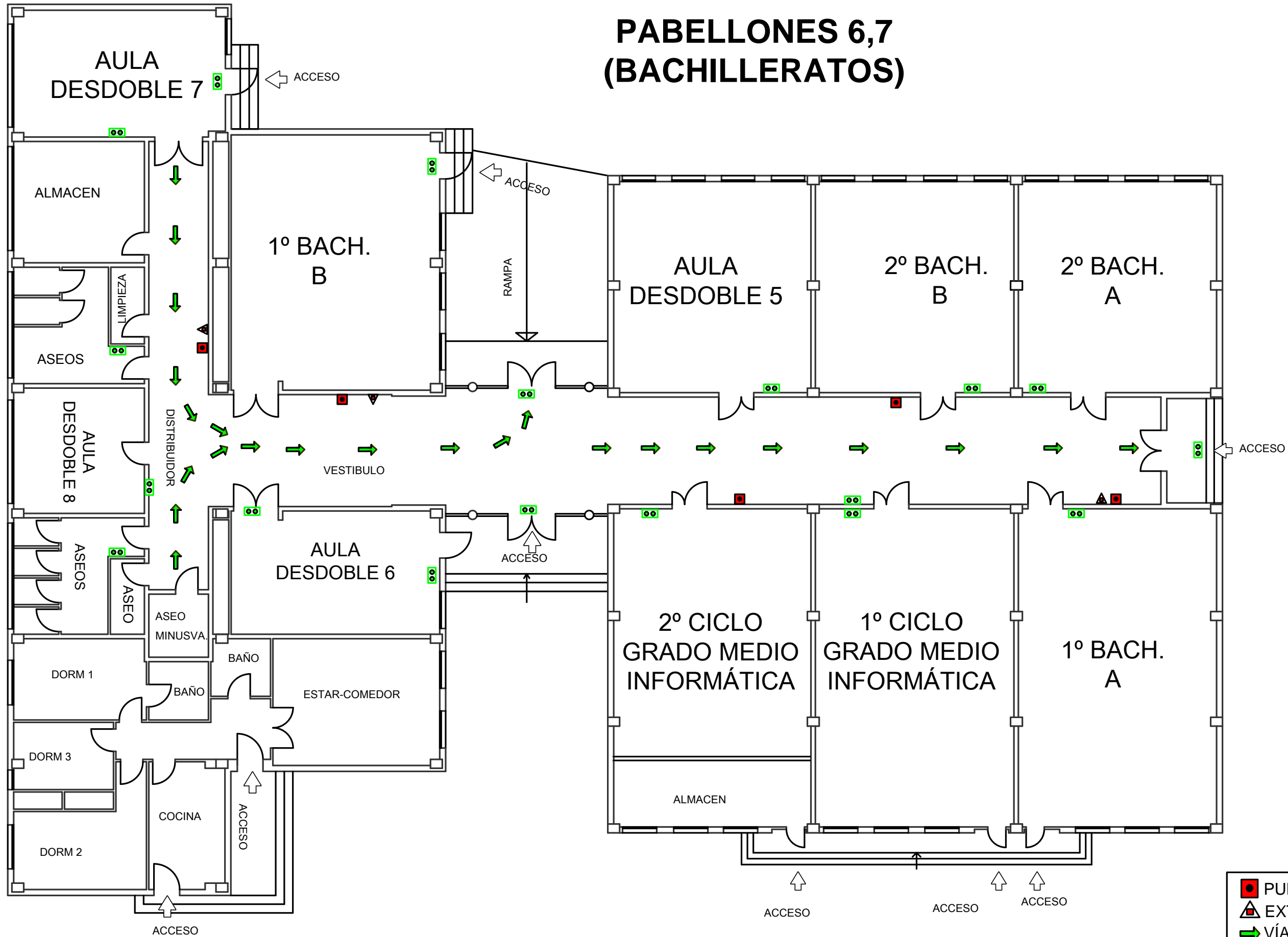
SALA DE CALDERAS

PABELLÓN 5  
PLANTA BAJA  
SUP. CONSTRUIDA : 599,39 m<sup>2</sup>

**I.E.S. ANTONIO SEQUEROS**  
C/ Comunidad Valenciana, 55-57  
03160 - Almoradí  
Tel: 965700962 Fax: 965701605

-  PULSADOR DE ALARMA
-  EXTINTOR
-  VÍAS DE EVACUACIÓN
-  LUCES DE EMERGENCIA
-  B.I.E.
-  ASCENSOR
-  USTED ESTÁ AQUÍ








# PABELLONES 6,7 (BACHILLERATOS)



PABELLÓN 7  
PLANTA BAJA  
SUP. CONSTRUIDA : 409,64 m<sup>2</sup>

PABELLÓN 6  
PLANTA BAJA  
SUP. CONSTRUIDA : 482,11 m<sup>2</sup>

**I.E.S. ANTONIO SEQUEROS**  
C/ Comunidad Valenciana, 55-57  
03160 - Almoradí  
Tel: 965700962 Fax: 965701605

-  PULSADOR DE ALARMA
-  EXTINTOR
-  VÍAS DE EVACUACIÓN
-  LUCES DE EMERGENCIA
-  B.I.E.
-  ASCENSOR
-  USTED ESTÁ AQUÍ

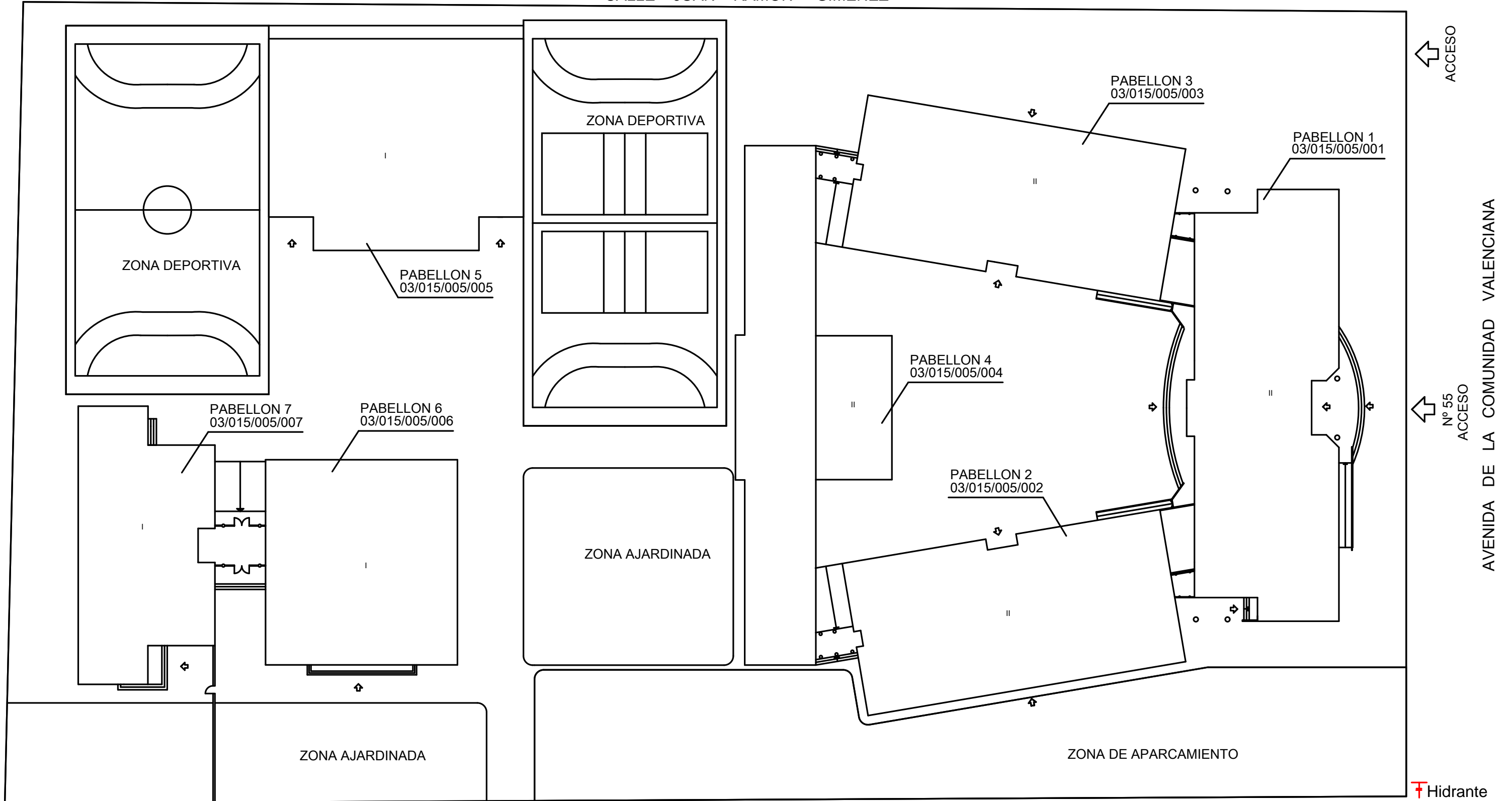
# I.E.S. ANTONIO SEQUEROS

C/ Comunidad Valenciana, 55-57

03160 - Almoradí

Tel: 965700962 Fax: 965701605

CALLE JUAN RAMÓN GIMÉNEZ



SUP. PARCELA.-	1.2994,59 m <sup>2</sup>
SUP. EDIFICADA PARCELA.-	3.728,29 m <sup>2</sup>
SUP. PISTAS DEPORTIVAS.-	1.848,00 m <sup>2</sup>
SUP. APARCAMIENTO.-	1.213,00 m <sup>2</sup>
SUP. LIBRE.-	6.205,30 m <sup>2</sup>